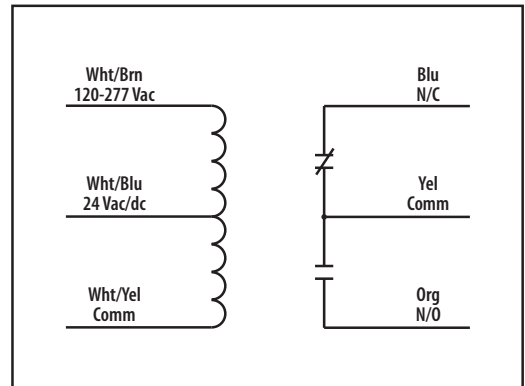


RIB2421C**10 AMP PILOT CONTROL RELAY**

Enclosed Relay 10 Amp SPDT with 24 Vac/dc/120-277 Vac Coil

**Contact Ratings:**10 Amp General Use @ 277 Vac
10 Amp Resistive @ 30 Vdc N/O
7 Amp Resistive @ 30 Vdc N/C
1/2 HP @ 125 Vac
1 HP @ 250 Vac
1/4 HP @ 277 Vac
470 VA Pilot Duty @ 125 Vac
770 VA Pilot Duty @ 250 Vac**Coil Current:**24 mA @ 20 Vac
28 mA @ 24 Vac
44 mA @ 35 Vac
20 mA @ 120 Vac
49 mA @ 277 Vac
13 mA @ 20 Vdc
16 mA @ 24 Vdc
25 mA @ 35 Vdc**Coil Voltage Input:**24 Vac/dc ; 120-277 Vac ; 50-60 Hz
Drop Out = 3 Vac / 3.8 Vdc
Pull In = 20 Vac / 20 Vdc**SPECIFICATIONS**

Relays & Contact Type: One (1) SPDT Continuous Duty Coil
Expected Relay Life: 10 million cycles minimum mechanical
Operating Temperature: -30 to 140° F
Operate Time: 20ms
Relay Status: LED On = Activated
Dimensions: 1.70" x 2.80" x 1.50" with .50" NPT nipple
Wires: 16", 600V Rated
Approvals: UL Listed, UL916, UL864, C-UL
California State Fire Marshal, CE, RoHS
Housing Rating: Plenum, NEMA 1
Gold Flash: No
Override Switch: No

**RIB2421C-RD**
» Red housing**RIB2421C-N4**
» NEMA 4X housing**Notes**www.hvacusa.com

Phone (877) 632-4876