

Gas Pressure Switches
Model - G



Model - G

Antunes Controls' new line of Gas Pressure Switches monitors gas pressure and breaks the electrical control circuit when pressure drops below or rises above the desired set point. The gas pressure settings are adjustable and all models are available in manual or automatic reset operation.

The switches are sturdy and constructed with a durable plastic electrical enclosure and a die-cast aluminum inlet base.

Features:

- Compact Design
- Accurate
- Adjustable Setpoints
- Manual or Automatic Reset
- Ventless
- Cost Effective Pricing
- Custom Design per OEM Specifications
- Mounts to Any Modular Valve Body

Specifications:

Reset

LGP-G - Single Unit, Lo-Pressure

HGP-G - Single Unit, Hi-Pressure

MODELS-RECYCLE

RLGP-G Single Unit, Lo-Pressure

RHGP-G Single Unit, Hi-Pressure

Electrical Ratings

10A @ 125 VAC

10A @ 250 VAC

1/3 HP, 125 & 250 VAC

Adjustable operating pressure

.5 W.C. to 4 psi (different ranges)

Surge pressure: 15 psi (1 Bar)

Max. Operating Pressure:

6 psi (400 mbar) Automatic Reset

2 psi (138 mbar) Manual Reset

Ambient Operating Temperature:

-40° to 140°F (-40° to 60°C)

Field wiring to be rated @ 60°C for maximum 140°F ambient.

Shipping Weight: .5 lbs. (.225 kilos)

Options: (Contact Antunes Controls)

*NEMA 4 (IP -65)

4-Pin DIN Connector,

Neon Lamp Indicator

Side Mounting

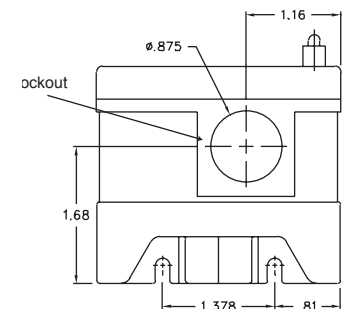
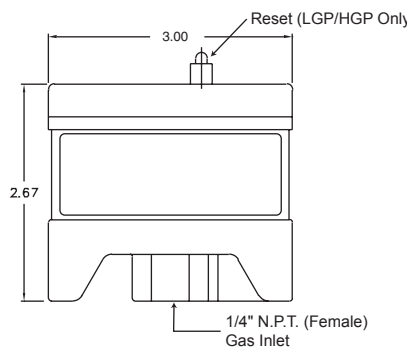
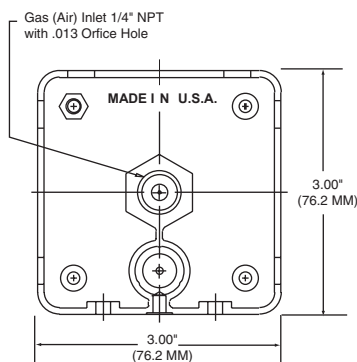
Low Ranges Available:

	Part No.	W.C.	mbar
LGP-G	8103116101	.5" - 4"	1.3 - 10
	8103116202	1" - 20"	3 - 50
	8103116303	5" - 30"	12.5 - 75
	8103116407	7" - 55"	17.5 - 137
RLGP-G	8104116102	.5" - 4"	1.3 - 10
	8104116203	1" - 20"	2.5 - 50
	8104116304	.5" - 30"	12.5 - 75
		PSI	Bar
	8104118005	1 - 4	.07 - .28

High Ranges Available:

	Part No.	W.C.	mbar
HGP-G	8101111202	.2" - 20"	5 - 50
	8101111303	8" - 35"	20 - 87
	8101111407	10" - 60"	25 - 150
RHGP-G	8102111102	.8" - 4"	2 - 10
	8102111203	2" - 20"	5 - 50
	8102111304	5" - 35"	12.5 - 87
		PSI	Bar
	8102113005	1 - 4	.07 - .28

Dimensions:



Limitation of Liability. If it is understood and agreed that seller's liability whether in contract, in tort, under any warranty, in negligence or otherwise, shall not exceed the return of the amount of the purchase price paid by purchaser and under no circumstances shall seller be liable for special, indirect or consequential damages. The price stated for the equipment is a consideration in limiting seller's liability. No action, regardless of form, arising out of the transactions may be brought by purchaser more than one year after the cause of action has accrued.



A.J. Antunes & Co.

A.J. Antunes & Co.
Headquarters/Manufacturing
180 Kehoe Boulevard
Carol Stream, Illinois 60188 USA
Phone (630) 784-1000
Toll Free (800) 253-2991
Fax: (630) 784-1650

Antunes Equipment
Manufacturing (Suzhou) Ltd.,
9 Hou Ju Road, Building #24,
S&T Park, SND
Suzhou, Jiangsu, China 215011
Phone: 86-512-6841-3637
Fax: 86-512-6841-3907

www.ajantunes.com