

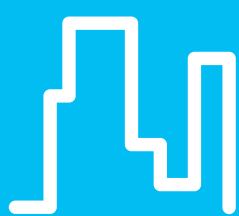
# SE8000 Room Controllers

## Product Catalog



Schneider Electric Room Controllers bridge the gap between the cost of stand-alone thermostats, and the performance of DDC systems, by simplifying installation and commissioning, to control roof top units, fan coil units, terminal units and heat pump applications, for a wide variety of facilities.

---



Commercial



Retail



Healthcare



Hotels



Education

# SE8000 Features

## Easy to install

No need to interrupt operations when installing room controllers. You can re-use existing wiring or communicate wirelessly to sensors and gateways, thereby lowering installation costs and keeping downtime in check.

## Precise comfort

Room controllers look like thermostats, but work like controllers. They deliver the optimal level of comfort while maximizing savings on energy and operational costs.

## Easy to commission

No need for software or other tools. Commissioning is done by configuration through the user interface of the room controller, thereby saving on engineering time and cost.

## Powerful control

Get the most out of your HVAC systems with the application-specific control and PID algorithms native to room controllers. You can also optimize your space by using the optional occupancy detection and scheduling features.

## Easy to scale

The native connectivity of room controllers enables upstream connection to a wide variety of Building Management Systems (BMS), and downstream connection to wired and wireless sensors.

## Significant savings

Room controllers provide an accelerated return on investment with savings at all levels: installation, commissioning, energy optimization, and maintenance.



On-board relative humidity sensor

Optional on-board PIR motion sensor

## The power to choose for customers who need more.

- > Wi-Fi IP ready
- > Over 70 design combinations with selectable casings, fascias, and display color schemes, to match any décor.
- > Customizable user interface, selectable languages, and advanced BACnet messaging for an unparalleled guest experience.
- > Highlight your brand by uploading a custom standby image or logo on the user interface.
- > Programmable with Lua4RC to modify control sequences, or override inputs and outputs.

# Table of contents

## SE8000 Room Controllers

SEZ8250 .....	10
SER8350 .....	11
SE8350 .....	12
SE8650 .....	13

## Accessories

Wireless Accessories .....	15
Fascias .....	18

## Relay Packs

VC3000 .....	21
VC1300 .....	22
VC2300 .....	22

Not all products in the catalogue may be available in every country, please check availability with the local Schneider Electric office.



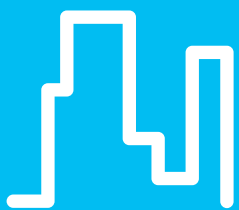


# Reduce energy waste & improve comfort.

Accelerate your return on investment with easy to install and commission room controllers



Schneider Electric Room Controllers provide comfort and energy savings using their native application-specific control sequences, PID algorithms, occupancy detection and schedule management.



Building



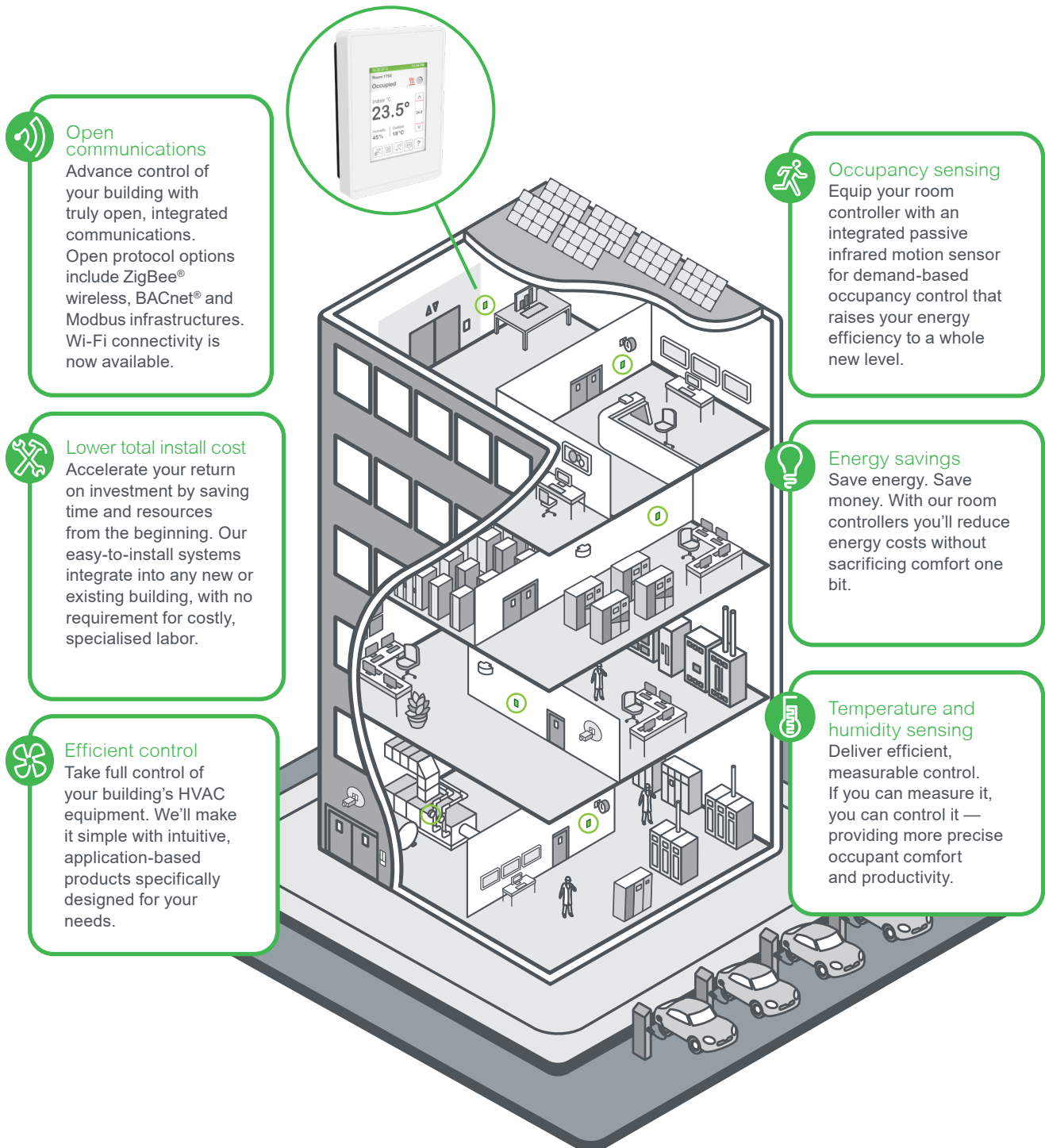
Efficient control



Green energy

# Cost-saving, energy-saving applications

From hotels and hospitals to schools, retail, and commercial buildings, Schneider Electric offers wide-ranging room control solutions for your building management needs. Whether retrofitting current systems with a more technologically advanced room controller or going green with a more environmentally friendly option, Schneider Electric has the ideal, cost-competitive solution. Our Room Controllers can be equipped with an integrated passive infrared motion sensor for demand-based occupancy control that opens up new opportunities in smart energy management.



SE8000 Room Controllers



## The perfect balance between simplicity and sophistication

The SE8000 Room Controllers are a sophisticated addition to the Schneider Electric portfolio of room controllers. With rich, customizable features, the SE8000 enables significant energy savings with accurate temperature control in any space. The SE8000 can be easily integrated into most Building Management Systems (BMS).

### Configurable languages



### Configurable color schemes



### Configurable user interface



### Common features

- Configurable sequence of operations
- Wired BACnet MS/TP, Wi-Fi BACnet IP or wired Modbus RTU network protocols
- Scheduler
- Programmable with Lua4RC to modify control sequences or override inputs and outputs
- On-board relative humidity sensor with dehumidification control sequences
- Optional on-board PIR motion sensor with occupancy-based control sequences
- On-board or plug-in ZigBee Pro module
- Wi-Fi connectivity via plug-in module
- Firmware updates via USB

### Orderable fascias



SEZ8250	SER8350 (with VC3000)	SE8350	SE8650
<p>➤ Variable Air Volume (VAV) units</p>	<p>➤ Line voltage fan coil units</p>	<p>➤ Low voltage fan coil units</p> <p>➤ Mixed voltage fan coil units</p> <p>➤ Zone control</p>	<p>➤ Rooftop units</p> <p>➤ Heat pumps</p> <p>➤ Indoor air quality</p>
<p><b>Variable Air Volume (VAV) units</b></p> <ul style="list-style-type: none"> <li>• Pressure dependent and independent VAV system</li> <li>• Fan speed and sequence of operations</li> <li>• ECM or On/Off fan control</li> <li>• Duct and/or baseboard heaters</li> </ul>	<p><b>Line voltage fan coil units</b></p> <ul style="list-style-type: none"> <li>• Requires VC3000 Relay Pack</li> <li>• Fan speed and sequence of operation</li> <li>• Two pipe</li> <li>• Four pipe</li> <li>• ECM fan control</li> </ul>	<p><b>Low voltage fan coil units</b></p> <ul style="list-style-type: none"> <li>• Fan speed and sequence of operation</li> <li>• Two pipe</li> <li>• Four pipe</li> <li>• ECM fan control</li> </ul> <p><b>Mixed voltage fan coil units</b></p> <ul style="list-style-type: none"> <li>• Requires VC1300/VC2300 Relay Pack</li> </ul>	<p><b>Rooftop units, heat pumps and indoor air quality</b></p> <ul style="list-style-type: none"> <li>• Economizer</li> <li>• CO2 sensor input</li> <li>• Fresh Air Station input</li> </ul> <p><b>Configurable stages</b></p> <ul style="list-style-type: none"> <li>• 1 heat/1 cool</li> <li>• 2 heat/2 cool</li> <li>• Modulation heat/2 cool</li> <li>• 3 heat/2 cool</li> </ul>

## Digital stand-alone and communicating room controllers

### SEZ8250 | Variable Air Volume (VAV) controller

This SEZ8250 terminal equipment controller provides contractors with an easy to implement solution for Variable Air Volume (VAV) applications. Designed for new construction and retrofit projects, this room controller dramatically decreases project delivery costs by reducing installation, configuration and commissioning time. It is designed for zone temperature control in Variable Air Volume systems. An Air Handling unit and a VAV rooftop unit serve many zones within a building by supplying a varying amount of supply air at a constant supply air temperature. Additional flexibility and energy savings can be achieved with optional wireless door, window, motion and water leak sensors. An elegantly simple casing combines with configurable screen colors to match decor. Display your own logo and custom messages on screen to reinforce your brand and provide a more enjoyable occupant experience.



#### Product highlights

- Elegant style combinations, designed to complement any decor
- Customizable color digital touch screen interface with multi-language support
- ECM or On/Off fan control
- Variable Air Volume (VAV) applications:
  - Pressure-independent VAV with a 0-10V differential pressure sensor
  - Pressure-dependent VAV
- On board configuration interface with balancing
- Alarm monitoring
- Suitable for both commercial and hospitality markets and systems
- Fully programmable control sequences using scripting
- Configurable scheduler
- Change of value (COV) function for BMS integration
- Humidity sensor
- Configurable I/O
- Optional PIR motion sensor
- Advanced occupancy functions for commercial and lodging applications
- Optional wireless door, window, motion and water leak sensors available
- Fresh air control (requires a CO<sub>2</sub> sensor)

#### Communication

- BACnet MS/TP or Modbus RTU (user selectable)
- ZigBee Pro (P) option for direct MPM integration (On-board or plug-in ZigBee Pro wireless module)
- BACnet/IP and email notification via Wi-Fi (with VCM8002V5031)

#### Facias

This model can be ordered with silver or white fascia, and can be customized with many different fascias. Refer to "Fascias" on page 18 for more information (later in this document).

#### Accessories

- CO<sub>2</sub> sensor module
- CO<sub>2</sub>/temperature/humidity sensor
- ZigBee wireless window, door, motion and water leak sensors

Description	
Dimension	Height: 12cm/4.72in
	Width: 8.6cm/3.38in
	Depth: 2.5cm/1in
Power	
Voltage	24 Vac 50/60Hz or 24 Vdc
	up to 6 VA power consumption
	94 VA Max. output load
Communication	
Protocol	BACnet MS/TP, or Modbus RTU
	ZigBee Pro (with VCM8000V5045P or on-board ZigBee)
	BACnet/IP and email notification via Wi-Fi (with VCM8002V5031)

Part Number	Description	BACnet MS/TP	PIR motion sensor	ZigBee Pro on-board	Fascia & casing
SEZ8250U0B00	VAV Pressure Dependant/Independant Controller	X		No*	Silver
SEZ8250U5B00	VAV Pressure Dependant/Independant Controller	X	X	No*	Silver
SEZ8250U5B00P	VAV Pressure Dependant/Independant Controller	X	X	X	Silver
SEZ8250U0B11	VAV Pressure Dependant/Independant Controller	X		No*	White
SEZ8250U5B11	VAV Pressure Dependant/Independant Controller	X	X	No*	White
SEZ8250U5B11P	VAV Pressure Dependant/Independant Controller	X	X	X	White

\*Note: ZigBee Pro plug-in module is available

## Digital stand-alone and communicating room controllers

### SER8350 | Line-voltage fan coil unit controller with VC3000 Relay Pack

This two component retrofit option consists of the SER8350 terminal equipment controller and the VC3000 Relay Pack (refer to page 21 or more information). Together, they provide an easy solution for retrofitting fan coil unit thermostats without requiring other components such as relays, transformers, controllers, sensors, and network wiring to be upgraded. Existing line voltage wiring between the fan coil unit and temperature Controller can be reused further minimizing overall labor and installation costs for both retrofit and new construction control projects. Additional flexibility and energy savings can be achieved with optional wireless door, window, motion and water leak sensors. An elegantly simple casing combines with configurable screen colors to match decor. Display your own logo and custom messages on screen to reinforce your brand and provide a more enjoyable occupant experience.



#### Product highlights

- Elegant style combinations, designed to complement any decor
- Customizable color digital touch screen interface with multi- language support
- 2 Pipe or 4 Pipe configuration
- ECM fan control
- Line voltage applications
- On board configuration interface utility
- Alarm monitoring
- Suitable for both commercial and hospitality markets and systems
- Fully programmable control sequences using scripting
- Configurable fan sequence of operation
- Configurable scheduler
- Change of value (COV) function for BMS integration
- Humidity sensor with on-board dehumidification strategy
- Configurable I/O
- Optional PIR motion sensor
- Advanced occupancy functions for commercial and lodging applications
- Optional wireless door, window, motion and water leak sensors available

#### Communication

- BACnet MS/TP or Modbus RTU (user selectable)
- ZigBee Pro (P) option for direct MPM integration (On-board or plug-in ZigBee Pro wireless module)
- BACnet/IP and email notification via Wi-Fi (with VCM8002V5031)

#### Facias

This model can be ordered with silver or white fascia, and can be customized with many different fascias. Refer to "Fascias" on page 18 for more information (later in this document)

#### Accessories

- The VC3000 Relay Pack is a necessary accessory for retrofit solution to use with the SER8350 room controller. Refer to "VC3000 Relay Pack" on page 21 or more information (later in this document).
- CO<sub>2</sub> sensor module
- CO<sub>2</sub>/temperature/humidity sensor
- ZigBee wireless window, door, motion and water leak sensors

Description	
Dimension	Height: 12cm/4.72in
	Width: 8.6cm/3.38in
	Depth: 2.5cm/1in
Power	
Voltage (SER8350)	Typical: 7 Vdc from VC3000
	Alternate: 24 Vac 50/60Hz or 24 Vdc up to 4 VA power consumption
Voltage (VC3000)	90 - 277 Vac universal, 50/60Hz
Communication	
Protocol	Stand-alone, BACnet MS/TP, or Modbus RTU
	ZigBee Pro (with VCM8000V5045P or on-board ZigBee)
	BACnet/IP and email notification via Wi-Fi (with VCM8002V5031)

Part Number	Description	BACnet MS/TP	RH sensor & control	PIR motion sensor	ZigBee Pro on-board	Fascia & casing
SER8350A0B00	Line voltage fan coil Controller	X	X		No*	Silver
SER8350A5B00	Line voltage fan coil Controller	X	X	X	No*	Silver
SER8350A0B11	Line voltage fan coil Controller	X	X		No*	White
SER8350A5B11	Line voltage fan coil Controller	X	X	X	No*	White
SER8350A5B00P	Line voltage fan coil Controller	X	X	X	X	Silver
SER8350A5B11P	Line voltage fan coil Controller	X	X	X	X	White

\*Note: ZigBee Pro plug-in module is available

## Digital stand-alone and communicating room controllers

### SE8350 | Low voltage fan coil unit and zone controller

Smart energy management has never been easier than with the SE8350 Fan coil unit room controllers. Designed for new construction and retrofit projects, the room controllers dramatically decrease project delivery costs by reducing installation, configuration and commissioning time. No complex software or tools are required to customize functionality to meet your applications requirements. The room controllers provide all the advanced features and monitoring functions required by modern building automation systems in a simple compact enclosure. An elegantly simple casing combines with configurable screen colors to match decor. Display your own logo and custom messages on screen to reinforce your brand and provide a more enjoyable occupant experience.



#### Description

Dimension	Height: 12cm/4.72in
	Width: 8.6cm/3.38in
	Depth: 2.5cm/1in

#### Power

Voltage	24 Vac 50/60Hz or 24 Vdc
	up to 6 VA power consumption
	94 VA Max. output load

#### Communication

Protocol	BACnet MS/TP, or Modbus RTU
	ZigBee Pro (with VCM8000V5045P or on-board ZigBee)
	BACnet/IP and email notification via Wi-Fi (with VCM8002V5031)

#### Product Highlights

- Elegant style combinations, designed to complement any decor
- Touch screen interface with multi-language support
- 2 Pipe or 4 Pipe configuration
- ECM fan control
- Suitable for both commercial and hospitality markets and systems
- Fully programmable control sequences using scripting
- On board configuration interface utility
- Configurable fan sequence of operation
- Configurable Scheduler.
- Change of value (COV) function for BMS integration.
- Humidity sensor with on-board dehumidification strategy
- Optional PIR motion sensor
- Advanced occupancy and scheduling functions for commercial and lodging applications
- Optional wireless door, window, motion and water leak sensors available.

#### Communication

- BACnet MS/TP or Modbus RTU (user selectable)
- ZigBee Pro (P) option for direct MPM integration (On-board or plug-in ZigBee Pro wireless module)
- BACnet/IP and email notification via Wi-Fi (with VCM8002V5031)

#### Facias

This model can be ordered with silver or white fascia, and can be customized with many different fascias. Refer to "Fascias" on page 18 for more information (later in this document).

#### Accessories

- CO<sub>2</sub> sensor module
- CO<sub>2</sub>/temperature/humidity sensor
- ZigBee wireless window, door, motion and water leak sensors

Part Number	Description	BACnet MS/TP	RH sensor & control	PIR motion sensor	ZigBee Pro on-board	Fascia & casing
SE8350U0B00	Low voltage fan coil Controller	X	X		No*	Silver
SE8350U5B00	Low voltage fan coil Controller	X	X	X	No*	Silver
SE8350U0B11	Low voltage fan coil Controller	X	X		No*	White
SE8350U5B11	Low voltage fan coil Controller	X	X	X	No*	White
SE8350U5B00P	Low voltage fan coil Controller	X	X	X	X	Silver
SE8350U5B11P	Low voltage fan coil Controller	X	X	X	X	White

\*Note: ZigBee Pro plug-in module is available



## Digital stand-alone and communicating room controllers

### SE8650 | Roof top unit, heat pump and indoor air quality room controller

Smart energy management has never been easier than with the SE8650 room controllers for roof top units, heat pumps and indoor air quality applications. Designed for new construction and retrofit projects, the room controllers dramatically decrease project delivery costs by reducing installation, configuration and commissioning time. No complex software or tools are required to customize functionality in order to meet your applications requirements. The room controllers provide all the advanced features and monitoring functions required by modern building automation systems in a simple compact enclosure. An elegantly simple casing combines with configurable screen colors to match decor. Display your own logo and custom messages on screen to reinforce your brand and provide a more enjoyable occupant experience.



#### Product highlights

- Elegant style combinations, designed to complement any decor
- Customizable color digital touch screen interface with multi-language support
- Configurable as 1H / 1C, 2H / 2C, 3H / 2C and Modulating (Analog) Heat / 2C for roof top units
- CO<sub>2</sub> and fresh air inputs for Indoor Air Quality (IAQ) applications
- Suitable for both commercial and hospitality markets and systems
- Fully programmable control sequences using scripting
- On board configuration interface utility
- Configurable sequence of operations
- Configurable Economizer
- Configurable Scheduler
- Change of value (COV) function for BMS integration
- Humidity sensor with on-board dehumidification strategy
- Optional Passive Infrared (PIR) occupancy sensor
- Advanced occupancy functions for commercial and lodging applications
- Optional wireless door, window, motion and water leak sensors available.

#### Communication

- BACnet MS/TP or Modbus RTU (user selectable)
- ZigBee Pro (P) option for direct MPM integration (On-board or plug-in ZigBee Pro wireless module)
- BACnet/IP and email notification via Wi-Fi (with VCM8002V5031)

#### Fascias

This model can be ordered with silver or white fascia, and can be customized with many different fascias. Refer to "Fascias" on page 18 for more information (later in this document).

#### Accessories

- CO<sub>2</sub> sensor module
- CO<sub>2</sub>/temperature/humidity sensor
- ZigBee wireless window, door, motion and water leak sensors

Description	
Dimension	Height: 12cm/4.72in
	Width: 8.6cm/3.38in
	Depth: 2.5cm/1in
Power	
Voltage	24 Vac 50/60Hz or 24 Vdc
	up to 6 VA power consumption
	94 VA Max. output load
Communication	
Protocol	BACnet MS/TP, or Modbus RTU
	ZigBee Pro (with VCM8000V5045P or on-board ZigBee)
	BACnet/IP and email notification via Wi-Fi (with VCM8002V5031)

Part Number	Description	BACnet MS/TP	RH sensor & control	PIR motion sensor	ZigBee Pro on-board	Fascia & casing
SE8650U0B00	RTU, heat pump & IAQ Controller	X	X		No*	Silver
SE8650U5B00	RTU, heat pump & IAQ Controller	X	X	X	No*	Silver
SE8650U0B11	RTU, heat pump & IAQ Controller	X	X		No*	White
SE8650U5B11	RTU, heat pump & IAQ Controller	X	X	X	No*	White
SE8650U5B00P	RTU, heat pump & IAQ Controller	X	X	X	X	Silver
SE8650U5B11P	RTU, heat pump & IAQ Controller	X	X	X	X	White

\*Note: ZigBee Pro plug-in module is available



Accessories


Wireless Accessories

BMS wireless integration

The wireless versions of the SE8000 room controllers provide a simple yet powerful solution which targets such retrofit installations where running new communication wiring is cost prohibitive. The wireless room controllers can dramatically reduce project installation costs by re-using the existing control wiring already in place between older electronic thermostats and the terminal equipment. No new network wires are required since the controllers rely on a fully integrated ZigBee wireless mesh network infrastructure. Connecting wireless SE8000 room controller devices into an integrated BMS network is made easy with two integration methods, either via a gateway or a wireless serial adapter.

EcoStruxure Building Expert Solution

Designed for small and medium commercial buildings, EcoStruxure™ Building Expert Solution integrates room controllers using Managers (MPM-GW, MPM-UN, MPM-VA), and provides remote management and supervision of the system through EcoStruxure™ Building Expert, a Web iBMS hosted directly by the MPM. For more information, visit <https://www.se.com/ww/en/work/campaign/innovation/overview.jsp>.



Part Number	Description
MPM-GW, MPM-UN, MPM-VA	Managers (MPM) from the EcoStruxure Building Expert Solution line of products

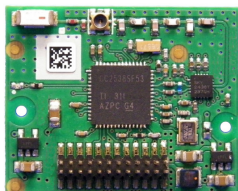


\* The MPM models correspond to room controllers using ZigBee Pro (P) communications only.

## Accessories

### Communication and sensors

SE8000 Room Controllers can be adapted to communicate via one of three VCM modules: Wireless ZigBee Pro extended profile, CO<sub>2</sub> detection sensor, or Wi-Fi extended profile. This allows the SE8000 to pair with a variety of wireless sensors and switches for more precise control of HVAC systems in response to occupancy, as well as to communicate wirelessly for integration with BMS and networks.



Part Number	Description	Compatibility
VCM8000V5045P	Wireless ZigBee Pro communication card	SE8000 Room Controllers



Part Number	Description	Compatibility
VCM8001V5045	CO <sub>2</sub> sensor module	SE8000 Room Controllers



Part Number	Description	Compatibility
VCM8002V5031	Wi-Fi module	SE8000 Room Controllers



Part Number	Description	Compatibility
SE8000BASEX4	Base thermostat connector	SE8000 Room Controllers



Part Number	Description	Compatibility
SED-CO2-G-5045	Wireless CO <sub>2</sub> sensor with room temperature and humidity	SE8000 Room Controllers
SED-TRH-G-5045	Wireless sensor with room temperature and humidity	SE8000 Room Controllers



Part Number	Description	Compatibility
SED-WMS-P-5045	Wireless wall mounted motion sensor	SE8000 Room Controllers

**Accessories**

Part Number	Description	Compatibility
SED-MTH-G-5045	Motion/Temperature/Humidity Sensor	SE8000 Room Controllers



Part Number	Description	Compatibility
SED-WDC-G-5045	Window/Door Sensor	SE8000 Room Controllers



Part Number	Description	Compatibility
SED-WLS-G-5045	Water Leakage Sensor	SE8000 Room Controllers

## Accessories

# Fascias

The fascias for the SE8000 room controllers enable the customization of the exterior appearance of the room controllers to match and blend with any decor. The default fascia that comes with SE8000 room controllers can be replaced with another snap-on fascia.

### FAS - 00

Silver



### FAS - 01

White



### FAS - 03

Glossy translucent white



### FAS - 05

Light tan wood



### FAS - 06

Dark brown wood



### FAS - 07

Dark black wood



### FAS - 10

Brushed steel finish



### FAS - 11

Metallic bronze



### FAS - 12

High gloss black



Part Number	Description
FAS-00	Silver
FAS-01	White
FAS-03	Glossy translucent white
FAS-05	Light tan wood
FAS-06	Dark brown wood
FAS-07	Dark black wood
FAS-10	Brushed steel finish
FAS-11	Metallic bronze
FAS-12	High gloss black

Some fascias may not be available in all markets. Verify fascia availability in your area.





# Check in to comfort. Check out the savings.

Hotel guest comfort meets energy savings with  
our room controllers



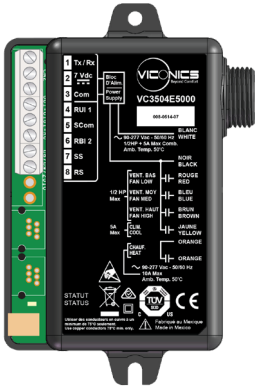
Relay Packs



Relay Packs

VC3000 | Relay Pack

A compact and easy to install Relay Pack for line-voltage fan coil units to be used in combination with room controllers. The VC3000 is a Relay Pack for line-voltage fan coil units. The device is used with SER8350 room controllers as a two component retrofit option.



Features

The VC3000 Relay Pack features an on-board universal voltage power supply and line-voltage relays which directly drive fractional horsepower fan motors and valves. This eliminates the need to install and wire costly pilot relays and transformers.

No previous building automation training is required for the installation and commissioning process.

Existing line voltage wiring between the fan coil unit and temperature Controller can be reused further minimizing overall labor and installation costs.

Description	
Dimension	Height: 12cm/4.72in / Width: 8.6cm/3.38in / Depth: 2.5cm/1in
Power	
Voltage output to SER8350	7.0 Vdc +/- 10% 2.4 watts minimum

Part Number	Details
VC3300E5000	Fan Coil Unit Relay Pack 3 slave fan outputs
VC3400E5000	Transformer Relay Pack 4 relay outputs 1 smart Vdc output 4 inputs
VC3404E5000	Fan Coil Unit Relay Pack 4 relay outputs 1 smart Vdc output 4 inputs
VC3500E5000	Transformer Relay Pack 5 relay outputs 4 inputs
VC3504E5000	Fan Coil Unit Relay Pack 5 relay fan outputs 4 outputs

## Relay Packs

### VC1300 | Mixed Voltage fan-coil package

A compact and easy to install Relay Pack for fan control for Mixed Voltages with 24 Vac transformer units to be used in combination with SE8350 room controllers as a two component Mixed Voltage solution.



#### Mixed Voltage Application

In combination with the SE8350 room controllers, the VC1300 allows control of a fan-coil requiring Mixed Voltage for the following:

- Line voltage for the 3-speed fan control (115 Vac unit)
- Low voltage for valve control
- LED indication of relay status

Description	
Dimension	Height: 5cm/2in / Width: 14cm/5.5in / Depth: 17cm/6.7in
Power	
Voltage	110-120 Vac 1 phase 50/60Hz
Contacts ratings	Resistive: 7A / 1680 W ; Motor and or compressor: ¼ Hp / 10 LRA / 2.5 FLA approved for 30,000 operations at 240 Vac
24 Vac low voltage power output	0.5A, 12 VA max
Outputs	
Number of outputs	3 on/off outputs
Part Number	Description
VC1300E5000	Fan coil relay board 115 Vac for Mixed Voltages with 24 Vac Transformer

### VC2300 | Mixed Voltage fan-coil package

A compact and easy to install Relay Pack for fan control for Mixed Voltages with 24 Vac transformer units to be used in combination with SE8350 room controllers as a two component Mixed Voltage solution.



#### Mixed Voltage Application

In combination with the SE8350 room controllers, the VC2300 allows control of a fan-coil requiring Mixed Voltage for the following:

- Line voltage for the 3-speed fan control (230 Vac unit)
- Low voltage for valve control
- LED indication of relay status

Description	
Dimension	Height: 5cm/2in / Width: 14cm/5.5in / Depth: 17cm/6.7in
Power	
Voltage	220-240 Vac 1 phase 50/60Hz
Contacts ratings	Resistive: 7A / 1680 W ; Motor and or compressor: ¼ Hp / 10 LRA / 2.5 FLA approved for 30,000 operations at 240 Vac
24 Vac low voltage power output	0.5A, 12 VA max
Outputs	
Number of outputs	3 on/off outputs
Part Number	Description
VC2300E5000	Fan coil relay board 230 Vac for Mixed Voltages with 24 Vac Transformer





# Energy savings for a healthy bottom line

Increase the comfort of patients, visitors, and employees while reducing energy consumption with our room controllers







### Commercial buildings

Room Controllers allow users to save costs and energy while providing a comfortable environment for maximum productivity. The system can be modified on site to match your specific energy conservation needs.



### Retail

Enhance your system operation and efficiency with the room controllers. From a stand-alone device to simplified building management, Schneider Electric Room Controllers are ideal for your ever-changing location.



### Healthcare

Gain full room control of your environment, whether it's a patient room, waiting room, or anywhere within your facility. Our Room Controllers give you the flexibility to customise and configure based on your needs.



### Hotels/lodging

Guest comfort meets energy efficiency with Room Controllers. The intuitive user interface allows guests to control their own environments while our occupancy sensor and simple programming ensure efficiency.



### Education

Whether it's a large campus with multiple buildings or a single primary school, the Room Controllers allow for scalability to control a wide variety of environments through occupied and unoccupied periods.



For more information, please visit [www.schneider-electric.com](http://www.schneider-electric.com)

#### Schneider Electric

Jägershillgatan 18  
Malmö SE-213 75, Sweden  
Tel.: +46 40 386 850

#### Schneider Electric

Boston ONE Campus  
800 Federal Street  
Andover, MA, USA  
Tel.: +1 (800) 225-0962

#### Schneider Electric

13th Floor, East Wing, Warwick House,  
Taikoo Place, 979 Kings Road,  
Quarry Bay, Hong Kong  
Tel.: +852 2980 8528